



**3 X 2010**

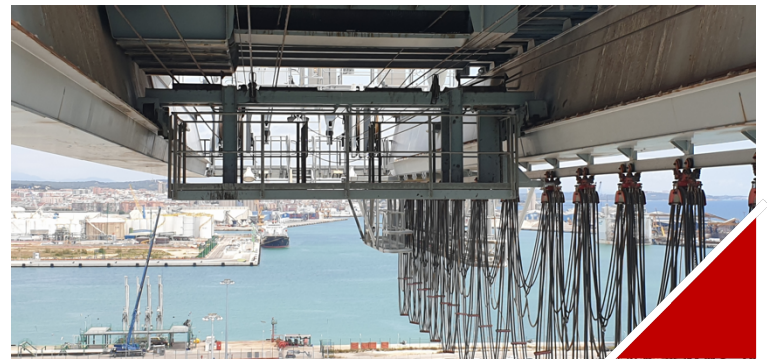
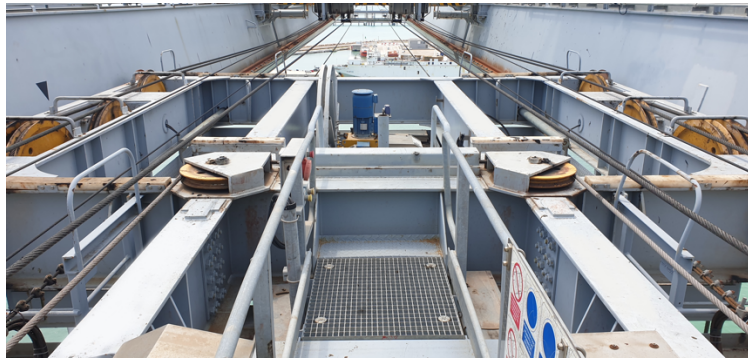
**SUPER POST PANAMAX STS**

**CRANES - AVAILABLE NOW**



**WORLD CRANE SERVICES**

**RELOCATIONS & BROKERAGE**





**BROKERAGE**  
**RELOCATIONS**  
**MODIFICATIONS**

| <b>STS</b>                     | <b><u>QC01</u></b>       | <b><u>QC02</u></b>       | <b><u>QC03</u></b>       |
|--------------------------------|--------------------------|--------------------------|--------------------------|
| <b>MANUFACTURER: PACECO</b>    |                          |                          |                          |
| <b>YEAR OF BUILD:</b>          | 2010                     | 2010                     | 2010                     |
| <b>SWL UNDER SPREADER:</b>     | 71 TON                   | 71 TON                   | 71 TON                   |
| <b>RAIL GAUGE:</b>             | 30.48 M                  | 30.48 M                  | 30.48 M                  |
| <b>LIFT HEIGHT ABOVE QUAY:</b> | 42.0 M                   | 42.0 M                   | 42.0 M                   |
| <b>OUTREACH:</b>               | 60.0 M                   | 60.0 M                   | 60.0 M                   |
| <b>BACK REACH:</b>             | 18.0 M                   | 18.0 M                   | 18.0 M                   |
| <b>SWL UNDER HOOK:</b>         | 88 TON                   | 88 TON                   | 88 TON                   |
| <b>TOTAL MOVE COUNT:</b>       | 193,979                  | 227,789                  | 117,847                  |
| <b>DISTANCE BETWEEN LEGS:</b>  | 18.08 M                  | 18.08 M                  | 18.08 M                  |
| <b>SPREADER MANUFACTURER:</b>  | <b>BROMMA</b>            | <b>BROMMA</b>            | <b>BROMMA</b>            |
| <b>SPREADER TYPE:</b>          | S/NO. 12232<br>TWIN LIFT | S/NO. 12232<br>TWIN LIFT | S/NO. 12232<br>TWIN LIFT |
| <b>CRANE LENGTH:</b>           | 108.48 M                 | 108.48 M                 | 108.48 M                 |
| <b>HOIST SPEED FULL LOAD:</b>  | 90 M/MIN                 | 90 M/MIN                 | 90 M/MIN                 |
| <b>TROLLEY SPEED:</b>          | 240 M/MIN                | 240M/MIN                 | 240 M/MIN                |
| <b>GANTRY SPEED:</b>           | 50 M/MIN                 | 50 M/MIN                 | 50 M/MIN                 |



WORLD CRANE SERVICES

YOUR PREFERRED SOLUTIONS PARTNER

• TRUSTED • INDEPENDENT • EXPERIENCED •