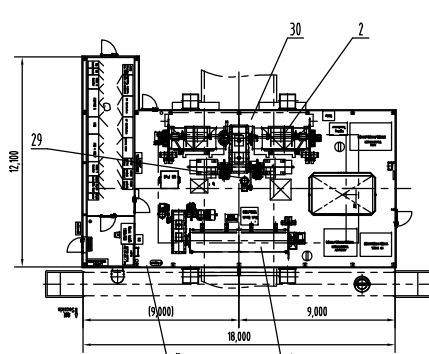
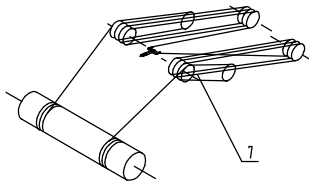


Boom hoist rope reeving

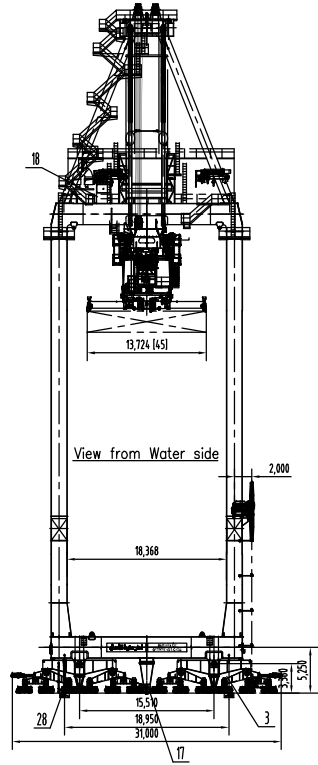
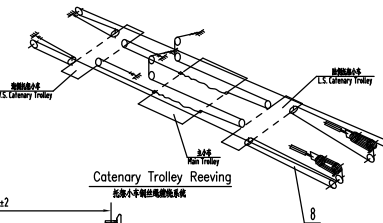
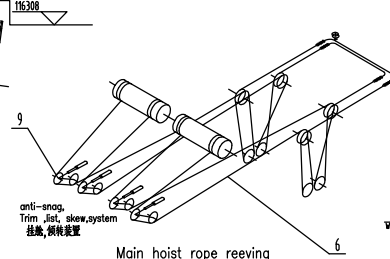
桅杆绳绕图



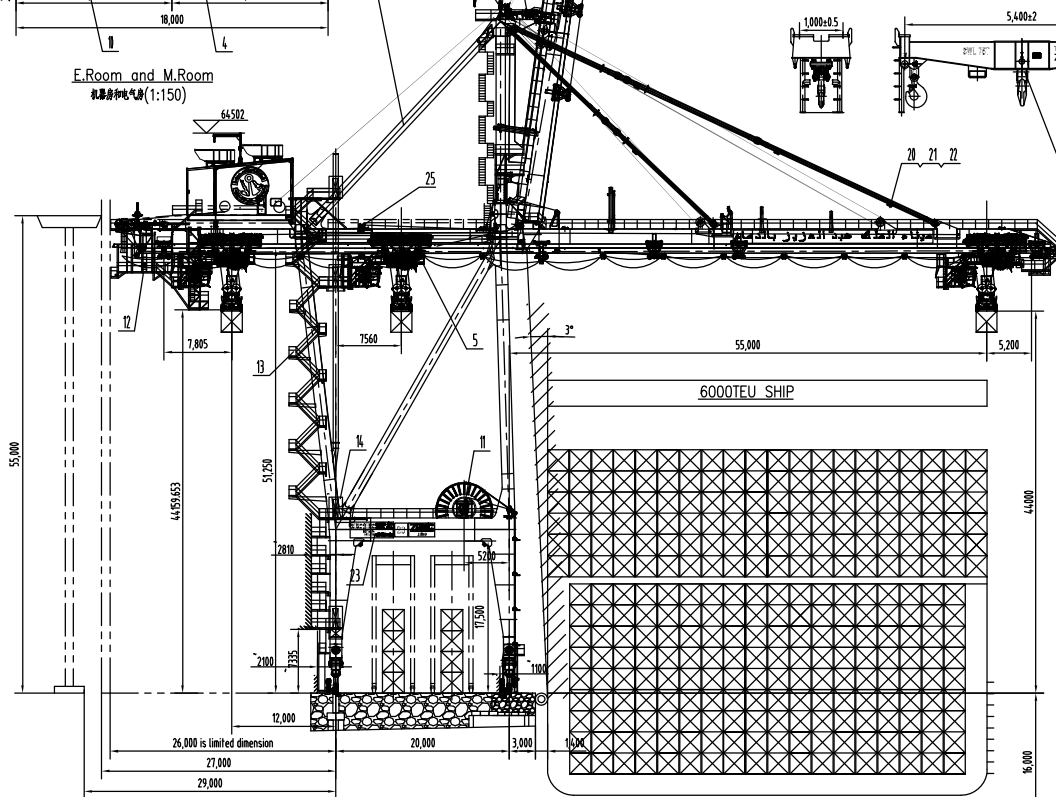
E.Room and M.Room
机房和电气房(1:150)

Main hoist rope reeving

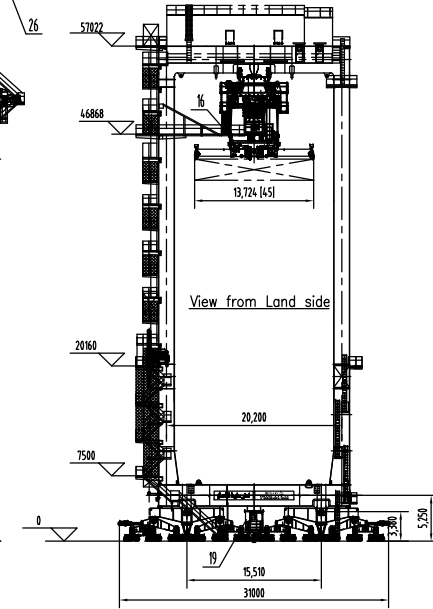
桅杆绳绕图



View from Water side

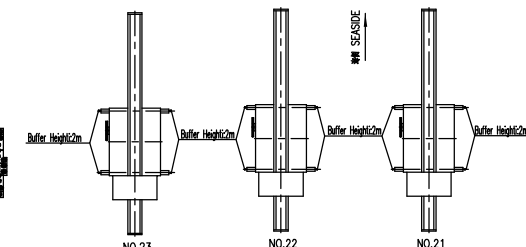


6000TEU SHIP



View from Land side

SIS arrangement on the Damman port



Particulars

Rated Capacity	Under Spreader	35T/55m, 40T/50m, 55T/56m, 65T/50m		
	Under Hook	75T/50m		
Speeds	Main Hoist	with rated load 60 m/min Empty Spreader 120 m/min		
	Trolley	200m/min		
	Gantry	45 m/min		
	Boom Hoisting Time(angle)	~5 min		
Motors	Main Hoist	2x500kw 750/1500rpm		
	Trolley	4x55kw 1450rpm		
	Gantry	24x12.5kw 1750rpm		
	Boom Hoist	200kw 1750rpm		
Roll Gauge		20 m		
Out reach	35T	40T	55T	65T
	55m	50m	36m	30m
Back reach	12 m			
	Above rail 44 m Total 60 m			
Height of lift	Trim	± 3'		
	List	± 5'		
	Skew	± 3'		
Power	13.8KV, 3Φ, 60Hz			
Gantry rail type	A100			

